

# LINDEN INFANT MORTALITY PROFILE



Where we live, learn, work and play has an impact on our health and the health of babies in our community.

CelebrateOne works with community leaders and residents in eight high-priority neighborhoods to make them safer and healthier for moms-to-be, babies, and families.

## INFANT MORTALITY<sup>1</sup>

This affects life expectancy

Infant mortality is the death of a child before they turn one year of age. In Central Ohio, black babies die at a rate 2.5 times that of white babies.

Linden	Franklin County
<b>24</b>	<b>781</b>
# of infant deaths from 2011-2015	

Linden	Franklin County
<b>20.2</b>	<b>8.4</b>
Infant deaths per 1,000 live births	

## LIFE EXPECTANCY<sup>1,2</sup>

Linden	Franklin County
<b>65.2</b>	<b>77.7</b>
Age In years	

## CAUSES OF INFANT MORTALITY

- Born too small and too soon
- Birth defects
- Unsafe sleep
- Smoking
- Neighborhood health

## UNSAFE SLEEP<sup>1</sup>

Once a baby is 1 month old, the biggest risk for infant mortality is sleep-related death. All babies should sleep alone, on their back, and in an empty crib.

16.7%

Linden	Franklin County
<b>4</b>	<b>110</b>
# of sleep-related infant deaths from 2011-2015	

One in six (16.7%) infant deaths in the Linden area were due to unsafe sleep, compared to approximately one in seven (14.1%) in Franklin County overall.

## LOW BIRTH WEIGHT<sup>1</sup>

The leading cause of infant death is babies being born too early and too small to survive.

Linden	Franklin County
<b>16.3</b>	<b>9.1</b>
% of births low birth weight (< 5.5 lbs)	


To learn more about CelebrateOne and provide input on our neighborhood development and community building plan...

▶ [www.CelebrateOne.info](http://www.CelebrateOne.info)

# WE CAN MAKE A DIFFERENCE

**IMPROVING** our neighborhood will improve our health and quality of life. We have a good place to start because there are many things we can celebrate about our community. ▼

- ### CIVIC LIFE
- South Linden Area Commission
  - North Linden Area Commission
  - Greater Linden Advisory Council
  - Greater Linden Business Network
  - Greater Linden Blockwatch Alliance
  - Celebrate Linden Community App Work Group
  - Central Health Advisory Committee

- ### PROJECTS
- CelebrateLinden Mobile App
  - Smart Columbus
  - COTA CMAX – Bus Rapid Transit
  - CelebrateOne Connector Corps
  - Linden Park Neighborhood Early Childhood Education Center
- 

### OUR GOAL

CelebrateOne is working to help our neighborhood thrive and for our neighbors to be as healthy as possible.

**6**

No more than 6 infant deaths per 1,000 live births!

**1/2**

Cut the disparity gap between white and black infant mortality in half!

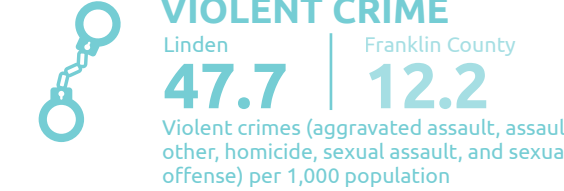
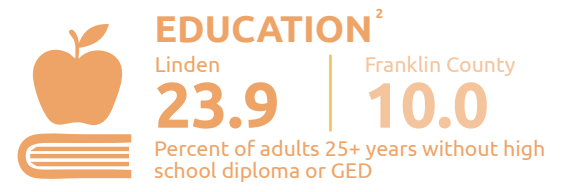
**Words residents used to describe Linden:**

“ Diverse • Changing • Helpful • Quiet Family-oriented • A good community Friendly • A nice place to live ”



### HEALTHY BABIES NEED HEALTHY NEIGHBORHOODS

Health is also related to the conditions where we live, learn, work and play. Health is quality schools, good jobs, safe places, decent housing... All of this and more determine the health of our neighborhood and babies.



**Data Sources:**  
 1. Ohio Department of Health Vital Statistics Data, Analyzed by Columbus Public Health  
 2. US Census American Community Survey 5-Year Estimates  
 3. US Department of Housing and Urban Development, Aggregated US Postal Service Administrative Data  
 4. Justice Atlas of Sentencing and Corrections

Years of Data: Life Expectancy - 20010-2014; Infant Mortality Rate - 2011-2015; Low Birth Weight - 2011-2015; Sleep-related infant deaths - 2011-2015; Adults without high school diploma or GED - 2014 (2011-2015 5-Year Estimates); Unemployment rate - 2014 (2010-2014 5-Year Estimates); Vacancy rate - 2016; Violent crime rate - 2014

